



BENSON POLYTECHNIC HIGH SCHOOL | MPC 5

PORTLAND PUBLIC SCHOOLS APRIL 14, 2016



AGENDA

Benson Polytechnic High School MPC-5

Agenda

<i>Facilitator:</i>	Karina	<i>Meeting:</i>	5
<i>Meeting Date:</i>	April 14, 2016	<i>Location:</i>	Benson HS – Room 125
<i>Record Taken By:</i>	DOWA-IBI Group	<i>Duration:</i>	6:00 – 8:00PM

- 6:00pm Welcome & Agenda Review
- 6:05pm Updated Area Program Review
- 6:10pm Key takeaways from MPC & Community Design Charrettes
- 6:25pm Parking Strategy
- 6:45pm Review of proposed Master Plan options
- 7:45pm Public Comment
- 7:55pm Closing & Next Steps

AREA PROGRAM

PROGRAM AREA	Ed Spec V2.6		BPHS Existing Program		BPHS Proposed Program		Delta for Reuse NSF
	#	NSF	#	NSF	#	NSF	
CORE ACADEMIC PROGRAMS							
General Education Classrooms <i>(English, Math, Social Studies, Health & World Language)</i>	41	40,180 <i>(980 SF Each)</i>	23	16,599 <i>(706 avg. SF Each)</i>	37	33,300 <i>(900 SF Each)</i>	
Science Classrooms (includes prep & chem stor)	11	16,500	6	7,048	11	16,500	
Extended Learning Areas		8,000		-		8,000	
TOTAL: CORE ACADEMIC PROGRAMS	52	64,680	29	23,647	48	57,800	
CAREER TECHNICAL EDUCATION (CTE)							
General CTE	3	6,000					
Construction POS			3	8,266	2	13,800	
Electrical POS			3	8,263	3	7,300	
Architecture POS			3	3,397	3	5,100	
Digital Media POS			2	6,994	4	11,150	
Applied Arts POS			Included in Fine & Performing Arts				
Radio POS			2	5,182	2	4,790	
CTE Education POS			-	-	2	2,620	
Health Services POS			7	7,899	8	9,199	
Computer Science POS			3	7,998	3	8,550	
Manufacturing POS			2	30,859	3	25,400	
Engineering POS			-	-	3	6,800	
Auto/Transportation Technology POS			5	29,001	5	26,830	
TOTAL: CAREER TECHNICAL EDUCATION	3	6,000	30	107,859	38	121,639	

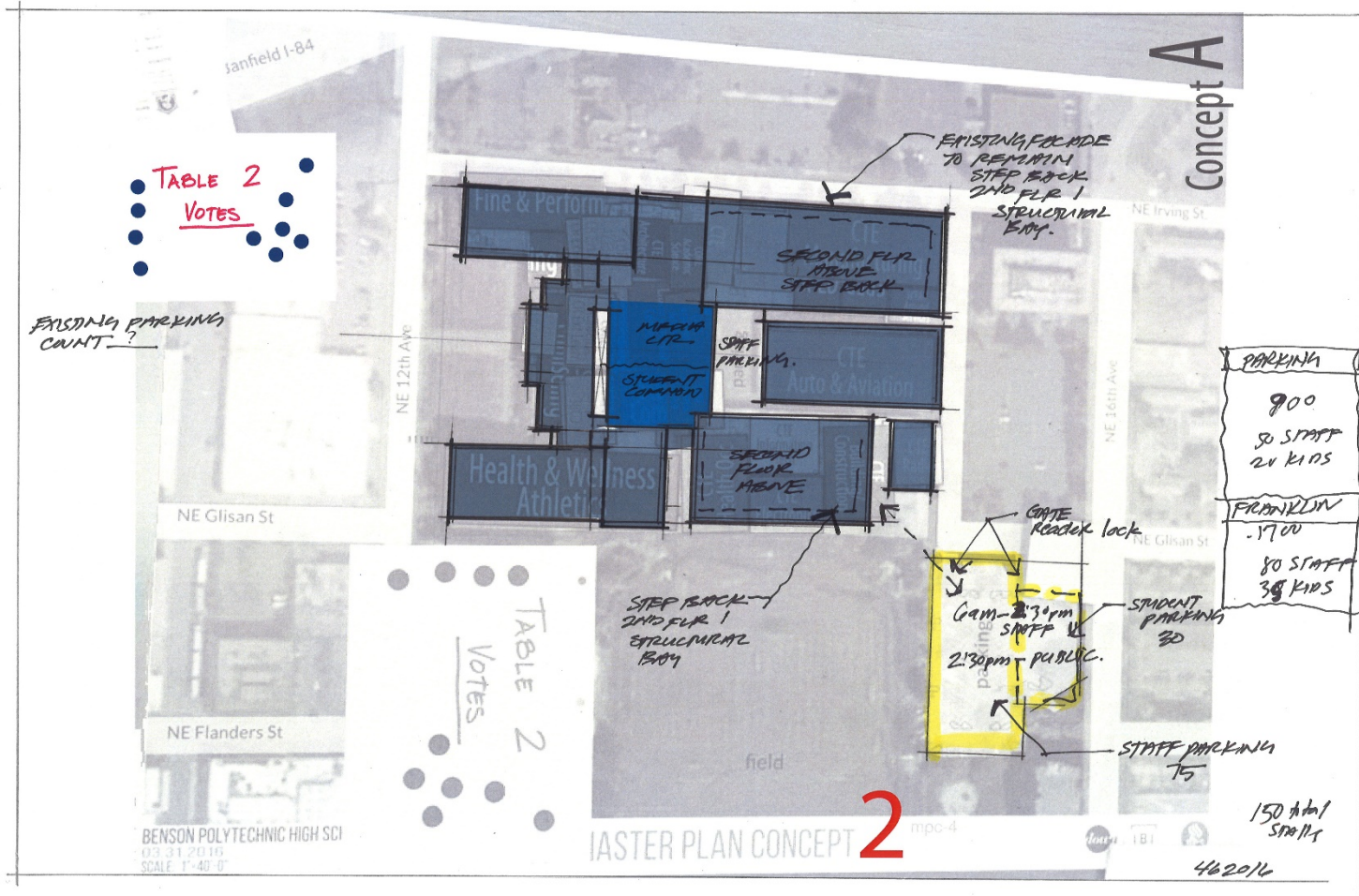
AREA PROGRAM

PROGRAM AREA	Ed Spec V2.6		BPHS Existing Program		BPHS Proposed Program		Delta for Reuse NSF
	#	NSF	#	NSF	#	NSF	
FINE & PERFORMING ARTS							
Fine & Visual Arts	2	3,080	2	1,939	2	3,080	
Band/Orchestra	1	3,470	-	-	1	3,470	
Choir		200	-	-	-	-	
Theater/Dance	1	14,600	-	17,284	1	18,884	4,284
TOTAL: FINE & PERFORMING ARTS	4	21,350	2	19,223	4	25,434	
PHYSICAL EDUCATION/ATHLETICS							
Physical Education/Athletics	3	35,580	3	55,172	3	55,172	19,592
TOTAL: PHYSICAL EDUCATION/ATHLETICS	3	35,580	3	55,172	3	55,172	
EDUCATIONAL SUPPORT							
Administration		15,260		10,920		15,260	
Counseling/Career		2,735		3,149		2,735	
Student Activities		270		-		270	
Technology Access		5,500		-		5,500	
Special Ed (SPED)		5,900		1,376		5,900	
Emerging Language Learning (ELL)	1	800		-	1	800	
Student Center		12,620		20,075		12,620	
Media Center/Library		10,220		10,126		10,220	
Student Space		200		-		200	
Custodial		3,850		1,949		3,850	
Building Support		10,045		4,249		10,045	
TOTAL: EDUCATIONAL SUPPORT	1	67,400		51,844	1	67,400	

AREA PROGRAM

PROGRAM AREA	Ed Spec V2.6		BPHS Existing Program		BPHS Proposed Program		Delta for Reuse NSF
	#	NSF	#	NSF	#	NSF	
SMALL INSTRUCTIONAL SPACES							
Small Instructional Spaces	10	5,000	-	-	10	5,000	
TOTAL: SMALL INSTRUCTIONAL SPACES	10	5,000			10	5,000	
PARTNER & COMMUNITY USES							
Clothing/Food Closet		1,200	-	-		1,200	
TOTAL: PARTNER & COMMUNITY USES		1,200				1,200	
WRAP AROUND SERVICE PROVIDERS							
Health Clinic		1,600		1,333		1,600	
Teen Parent Services		2,100		-		2,100	
Alternate Program Classrooms		1,000		19,150		1,000	
TOTAL: WRAP AROUND SERVICE PROVIDERS		4,700		20,483		4,700	
TOTAL ASSIGNABLE SQUARE FOOTAGE	70	205,910	64	278,229	104	338,345	23,876
Subtotal - Unassignable Area	36%	74,128	40.5%	112,771	36%	121,804	
TOTAL BUILDING GROSS SQUARE FOOTAGE		280,038		391,000		460,150	

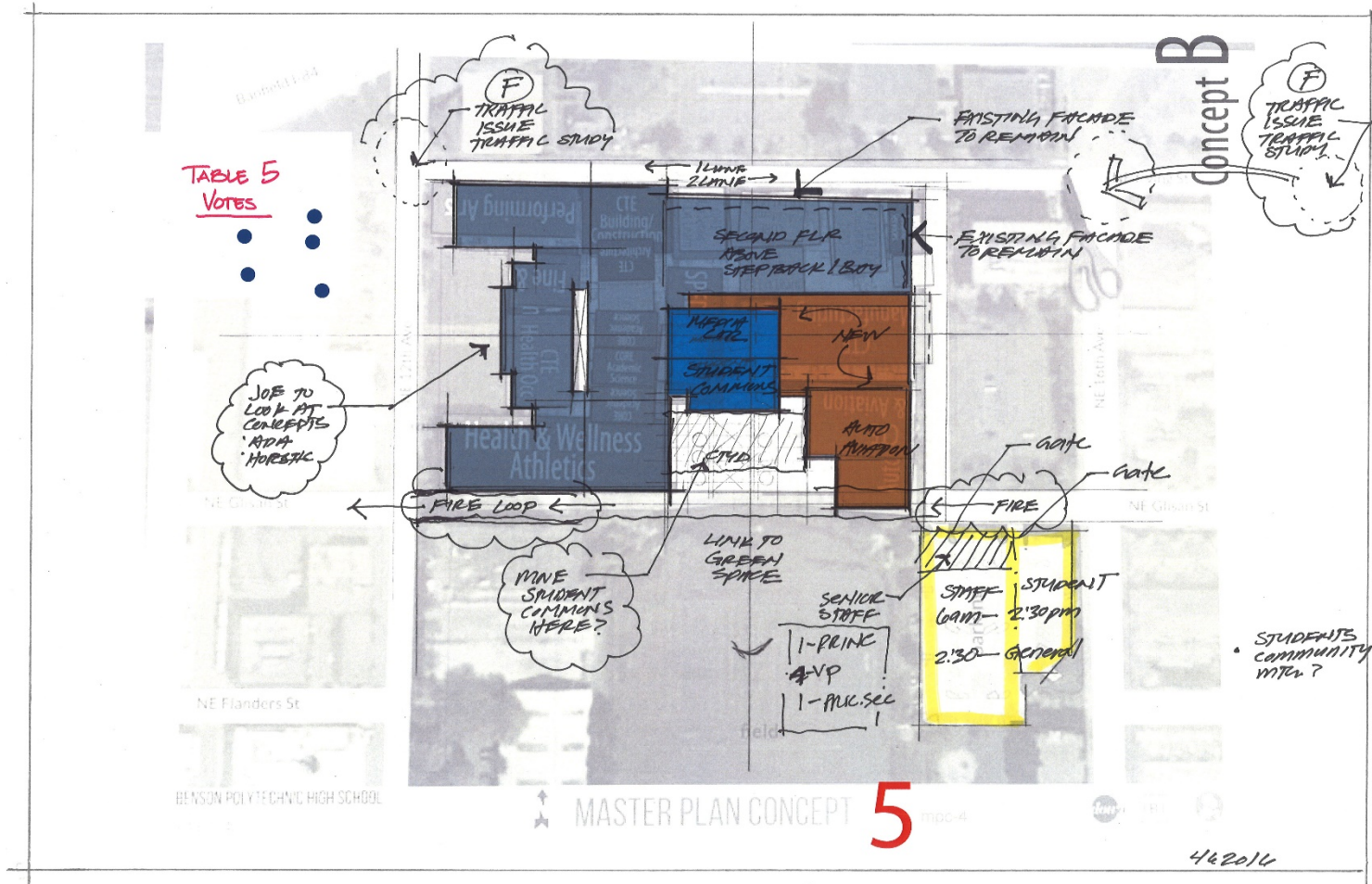
CHARRETTE TAKE-AWAYS



- Maintain existing buildings
- Library & Students commons at center of campus
- Connection between: Construction, Architecture, Digital Media and Engineering
- Manufacturing to remain at current location

- Main building: Connecting academic programs with a common interior open space (natural daylight)
- Student/Staff Parking in adjacent lot
- Remove cars from center of Campus

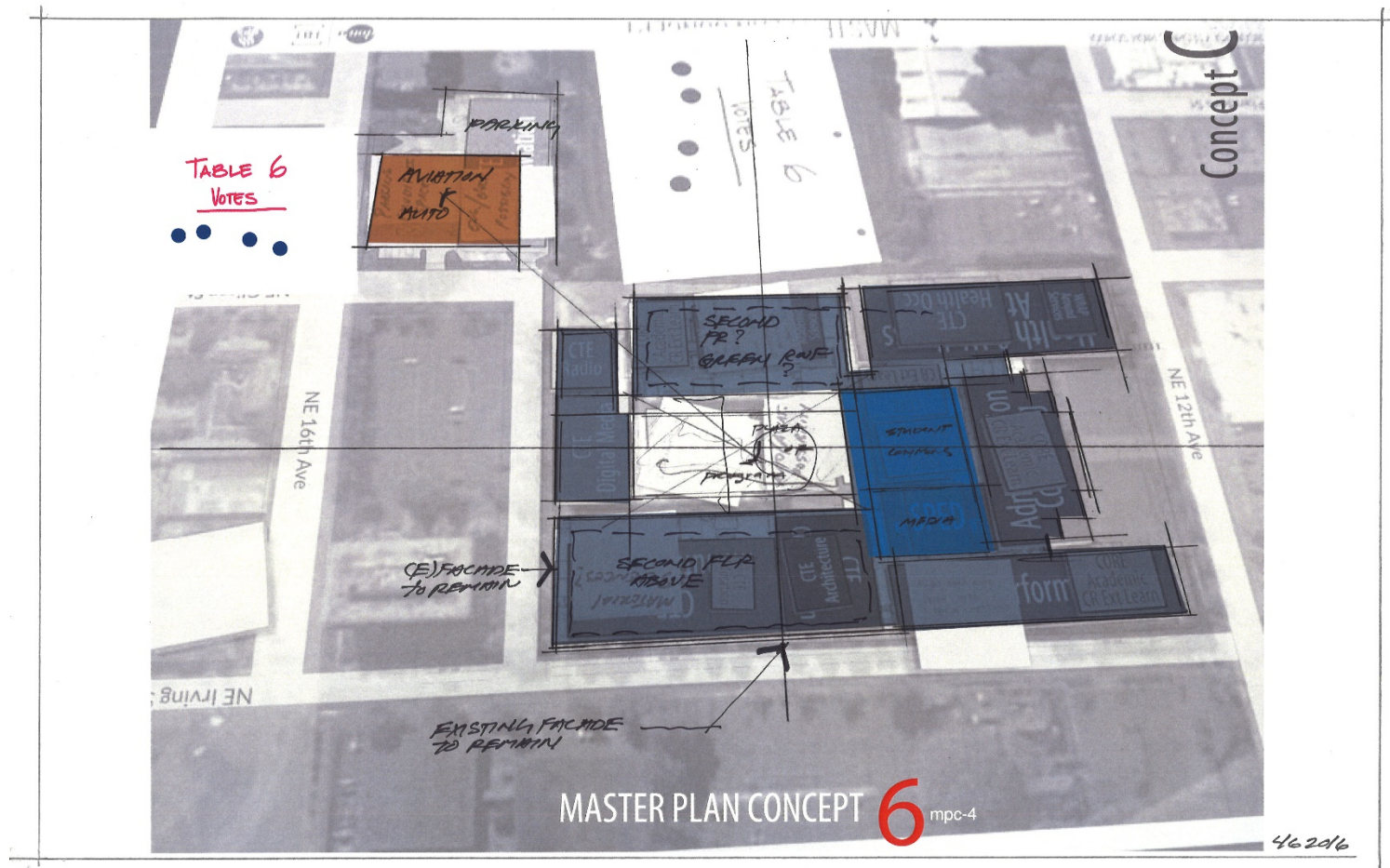
CHARRETTE TAKE-AWAYS



- Maintain existing Main Building & North Wing
- Demo Auto Shop & South Wing
- Create Student Courtyard facing south

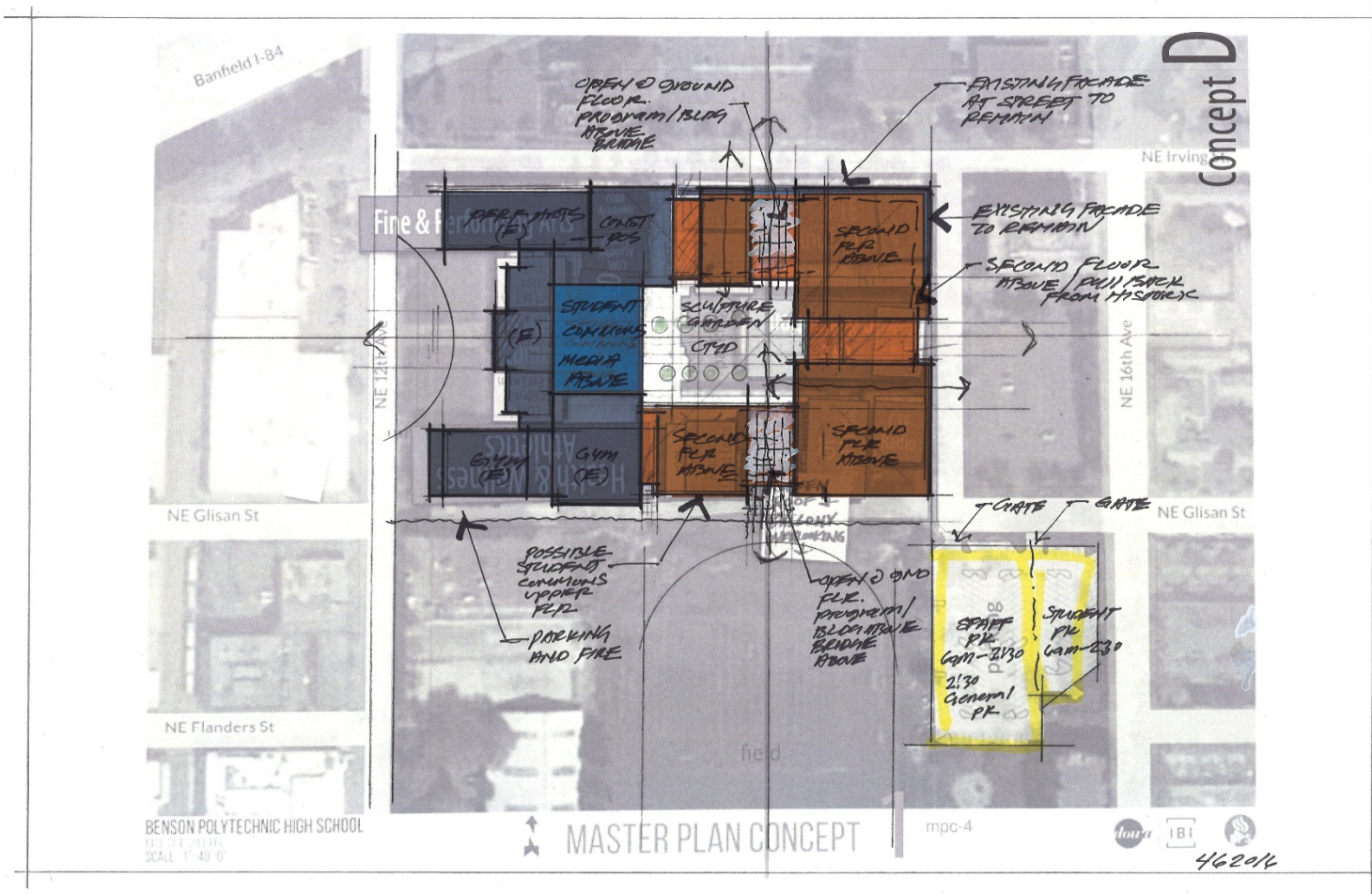
- Build New CTE spaces along 15th Street
- Student/Staff Parking in adjacent lot
- Remove cars from center of Campus

CHARRETTE TAKE-AWAYS



- Maintain existing Main Building, North & South Wings
- Relocate Auto Shop to adjacent lot
- Create Student Courtyard in center of school
- Library & Students commons at center of campus
- Remove cars from center of Campus
- Build additional program space along 15th Street

NEW PROPOSED SCHEME



- Maintain existing Main Building
- Rebuild CTE shop spaces
- Create Student Courtyard in center of school

- Library & Students commons at center of campus
- Remove cars from center of Campus
- Student/Staff Parking in adjacent lot

PROPOSED MASTER PLAN CONCEPTS



Banfield I-84

NE Irving St.



NE Glisan St

NE 16th Ave

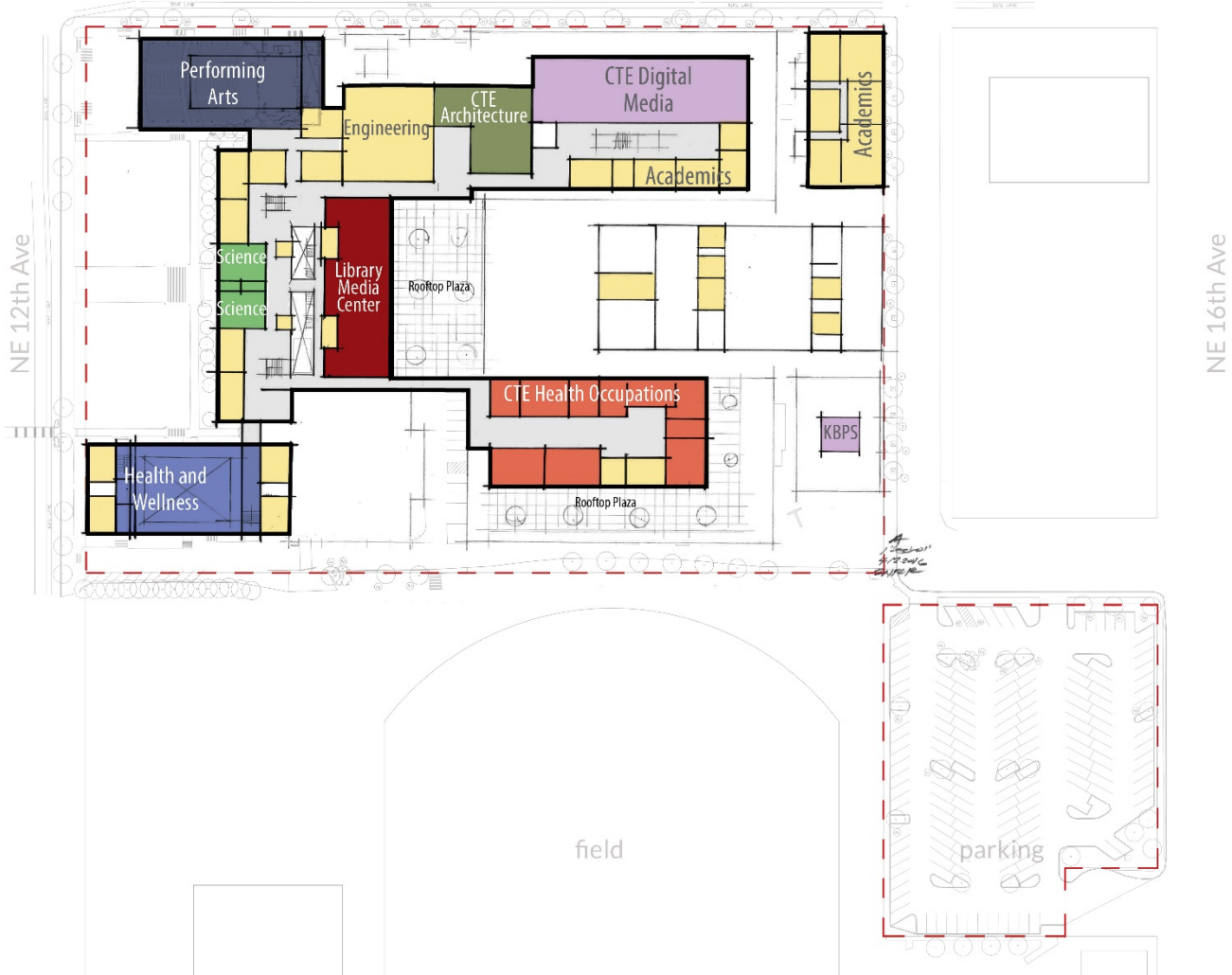
field

parking

- | | | | |
|---------------------------------|--------------------------------|------------------------------------|---|
| CTE - ARCHITECTURE/DRAFTING | CTE - DIGITAL MEDIA/RADIO KBPS | CTE - EDUCATION AND CORE ACADEMICS | VISUAL ARTS |
| CTE - AUTOMOTIVE | CTE - ELECTRIC | SPECIAL EDUCATION (SPED) | ADMINISTRATIVE/SUPPORT SPACES |
| CTE - BUILDING CONSTRUCTION | CTE - HEALTH OCCUPATIONS | SCIENCE CORE ACADEMICS | ALTERNATIVE PROGRAMS (NON-BENSON) Alliance, DART, Pioneer, PISA, etc... |
| CTE - COMPUTER SCIENCE/ROBOTICS | CTE - MANUFACTURING TECH | ATHLETICS/HEALTH | CAFETERIA KITCHEN (BASEMENT SUPPORT SPACES) |

Banfield I-84

NE Irving St.



NE Glisan St

NE 16th Ave

field

parking

- CTE - ARCHITECTURE/DRAFTING
- CTE - AUTOMOTIVE
- CTE - BUILDING CONSTRUCTION
- CTE - COMPUTER SCIENCE/ROBOTICS

- CTE - DIGITAL MEDIA/RADIO KBPS
- CTE - ELECTRIC
- CTE - HEALTH OCCUPATIONS
- CTE - MANUFACTURING TECH

- CTE - EDUCATION AND CORE ACADEMICS
- SPECIAL EDUCATION (SPED)
- SCIENCE CORE ACADEMICS
- ATHLETICS/HEALTH

- VISUAL ARTS
- ADMINISTRATIVE/SUPPORT SPACES
- ALTERNATIVE PROGRAMS (NON-BENSON) Alliance, DART, Pioneer, PISA, etc...
- CAFETERIA KITCHEN (BASEMENT SUPPORT SPACES)



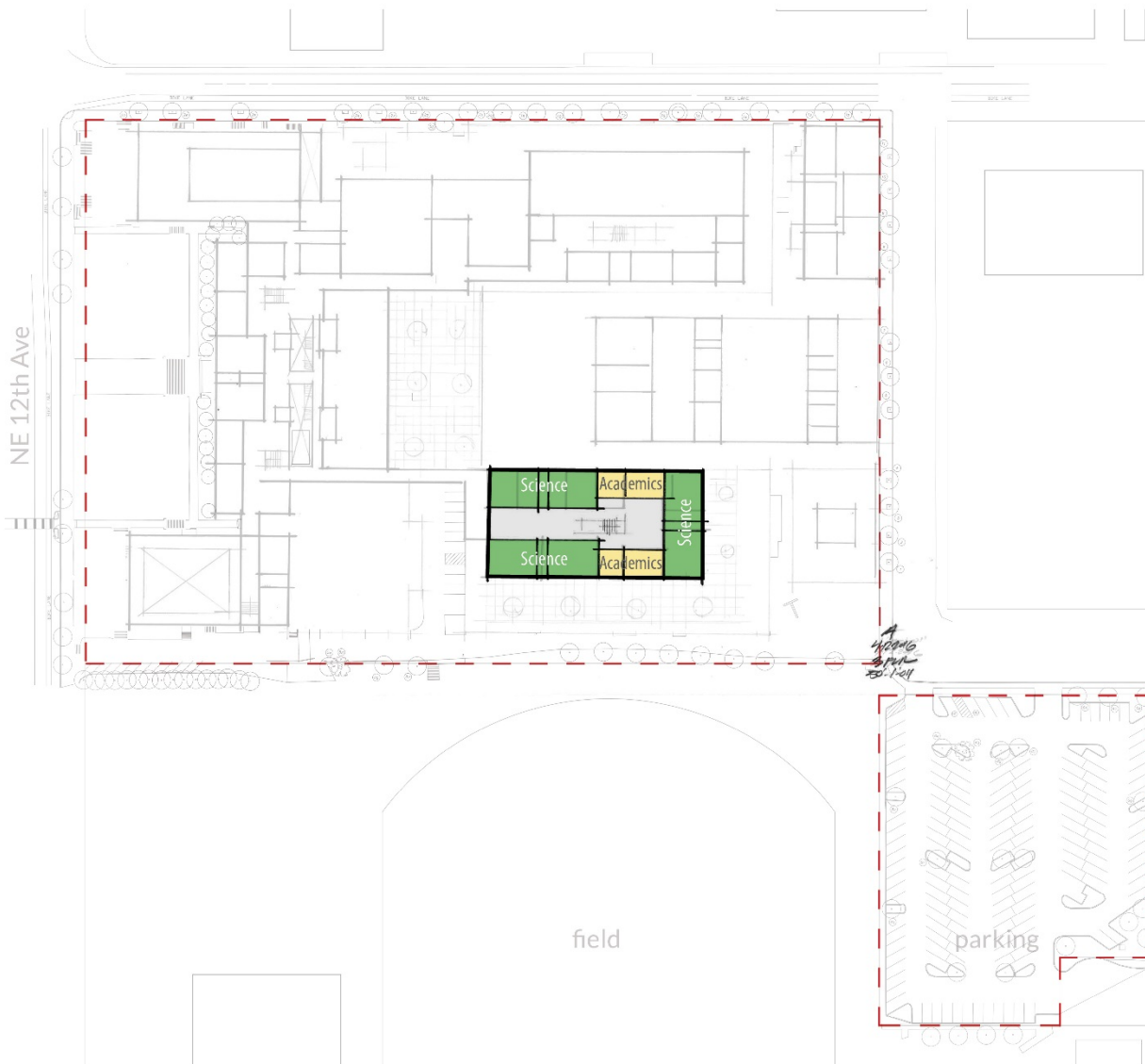
Banfield I-84

NE Irving St.

NE 12th Ave

NE 16th Ave

NE Glisan St



- CTE - ARCHITECTURE/DRAFTING
- CTE - AUTOMOTIVE
- CTE - BUILDING CONSTRUCTION
- CTE - COMPUTER SCIENCE/ROBOTICS

- CTE - DIGITAL MEDIA/RADIO KBPS
- CTE - ELECTRIC
- CTE - HEALTH OCCUPATIONS
- CTE - MANUFACTURING TECH

- CTE - EDUCATION AND CORE ACADEMICS
- SPECIAL EDUCATION (SPED)
- SCIENCE CORE ACADEMICS
- ATHLETICS/HEALTH

- VISUAL ARTS
- ADMINISTRATIVE/SUPPORT SPACES
- ALTERNATIVE PROGRAMS (NON-BENSON) Alliance, DART, Pioneer, PISA, etc...
- CAFETERIA KITCHEN (BASEMENT SUPPORT SPACES)

BENSON POLYTECHNIC HIGH SCHOOL
 04.14.2016 MPC-5
 SCALE: 1"=40'-0"

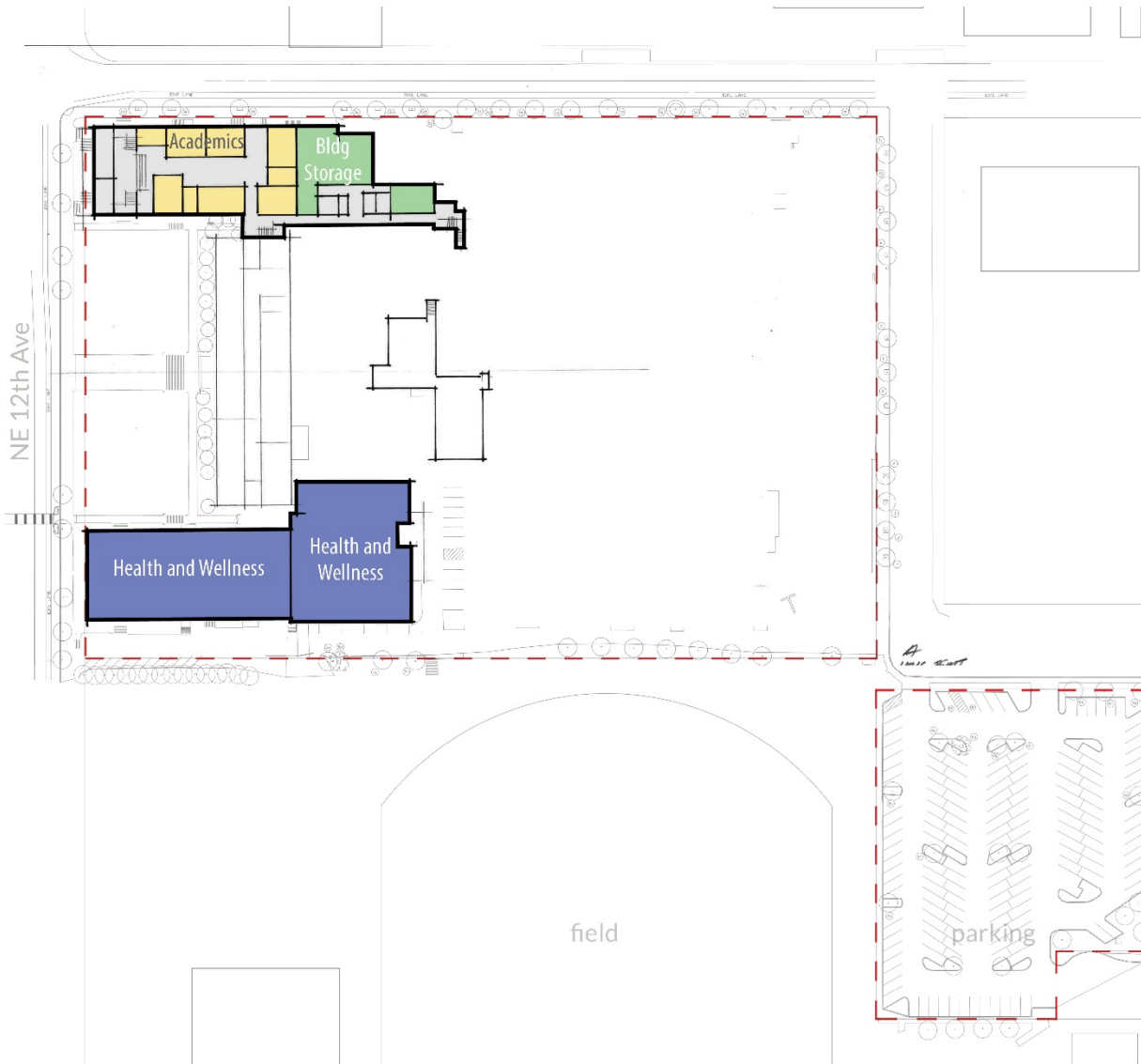


MASTER PLAN CONCEPT **A** LEVEL 3



Banfield I-84

NE Irving St.



NE Glisan St

NE 16th Ave

- CTE - ARCHITECTURE/DRAFTING
- CTE - AUTOMOTIVE
- CTE - BUILDING CONSTRUCTION
- CTE - COMPUTER SCIENCE/ROBOTICS

- CTE - DIGITAL MEDIA/RADIO KBPS
- CTE - ELECTRIC
- CTE - HEALTH OCCUPATIONS
- CTE - MANUFACTURING TECH

- CTE - EDUCATION AND CORE ACADEMICS
- SPECIAL EDUCATION (SPED)
- SCIENCE CORE ACADEMICS
- ATHLETICS/HEALTH

- VISUAL ARTS
- ADMINISTRATIVE/SUPPORT SPACES
- ALTERNATIVE PROGRAMS (NON-BENSON) Alliance, DART, Pioneer, PISA, etc...
- CAFETERIA KITCHEN (BASEMENT SUPPORT SPACES)

BENSON POLYTECHNIC HIGH SCHOOL
 04.14.2016 MPC-5
 SCALE: 1"=40'-0"



MASTER PLAN CONCEPT **A** LEVEL 0



Banfield I-84

NE Irving St.



NE Glisan St

NE 16th Ave

field

parking

- CTE - ARCHITECTURE/DRAFTING
- CTE - AUTOMOTIVE
- CTE - BUILDING CONSTRUCTION
- CTE - COMPUTER SCIENCE/ROBOTICS

- CTE - DIGITAL MEDIA/RADIO KBPS
- CTE - ELECTRIC
- CTE - HEALTH OCCUPATIONS
- CTE - MANUFACTURING TECH

- CTE - EDUCATION AND CORE ACADEMICS
- SPECIAL EDUCATION (SPED)
- SCIENCE CORE ACADEMICS
- ATHLETICS/HEALTH

- VISUAL ARTS
- ADMINISTRATIVE/SUPPORT SPACES
- ALTERNATIVE PROGRAMS (NON-BENSON) Alliance, DART, Pioneer, PISA, etc...
- CAFETERIA KITCHEN (BASEMENT SUPPORT SPACES)

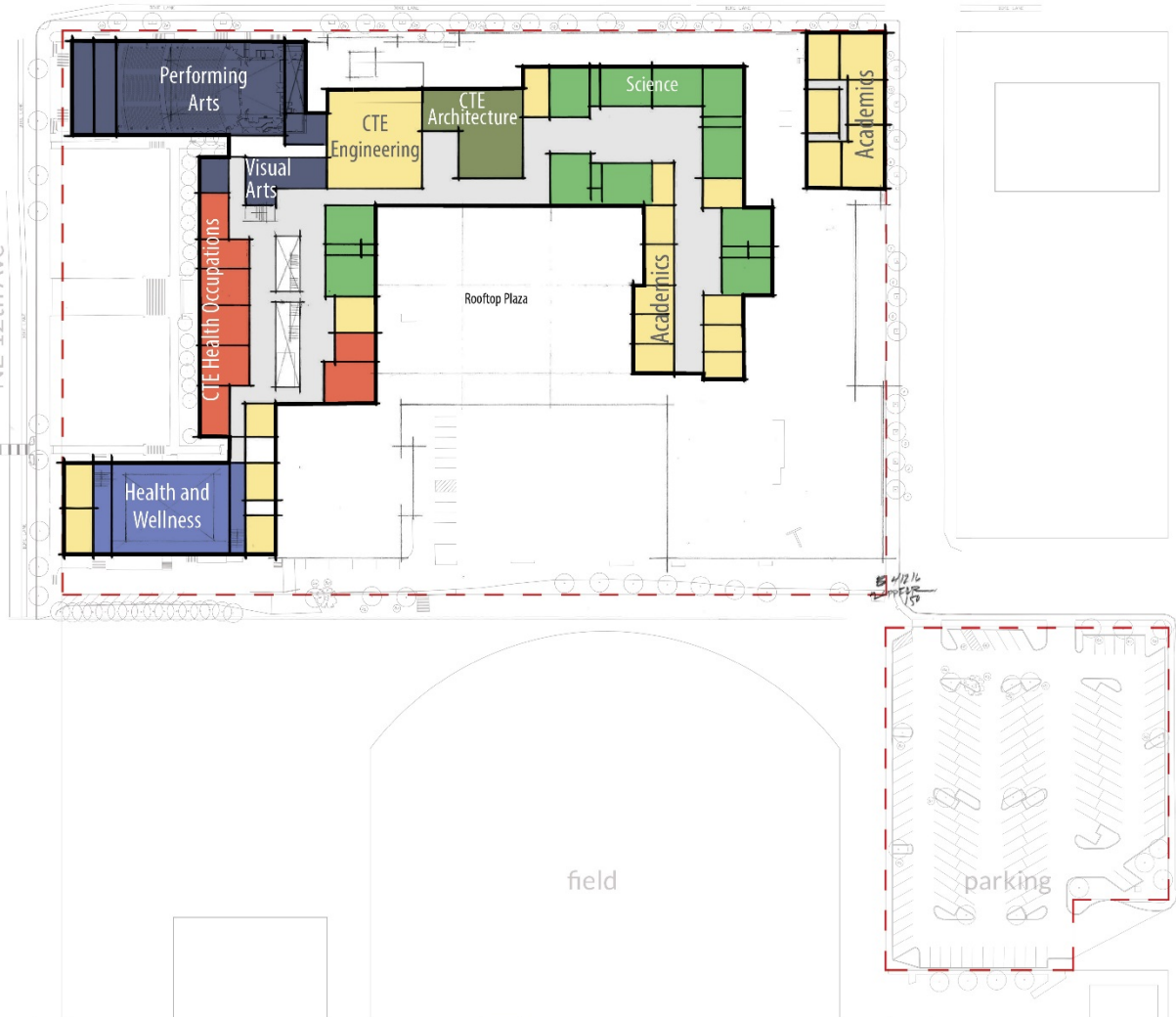
Banfield I-84

NE Irving St.

NE Glisan St

NE 12th Ave

NE 16th Ave



- | | | | |
|---------------------------------|--------------------------------|------------------------------------|---|
| CTE - ARCHITECTURE/DRAFTING | CTE - DIGITAL MEDIA/RADIO KBPS | CTE - EDUCATION AND CORE ACADEMICS | VISUAL ARTS |
| CTE - AUTOMOTIVE | CTE - ELECTRIC | SPECIAL EDUCATION (SPED) | ADMINISTRATIVE/SUPPORT SPACES |
| CTE - BUILDING CONSTRUCTION | CTE - HEALTH OCCUPATIONS | SCIENCE CORE ACADEMICS | ALTERNATIVE PROGRAMS (NON-BENSON) Alliance, DART, Pioneer, PISA, etc... |
| CTE - COMPUTER SCIENCE/ROBOTICS | CTE - MANUFACTURING TECH | ATHLETICS/HEALTH | CAFETERIA KITCHEN (BASEMENT SUPPORT SPACES) |

BENSON POLYTECHNIC HIGH SCHOOL
 04.14.2016 MPC-5
 SCALE: 1"=40'-0"



MASTER PLAN CONCEPT **B** LEVEL 2



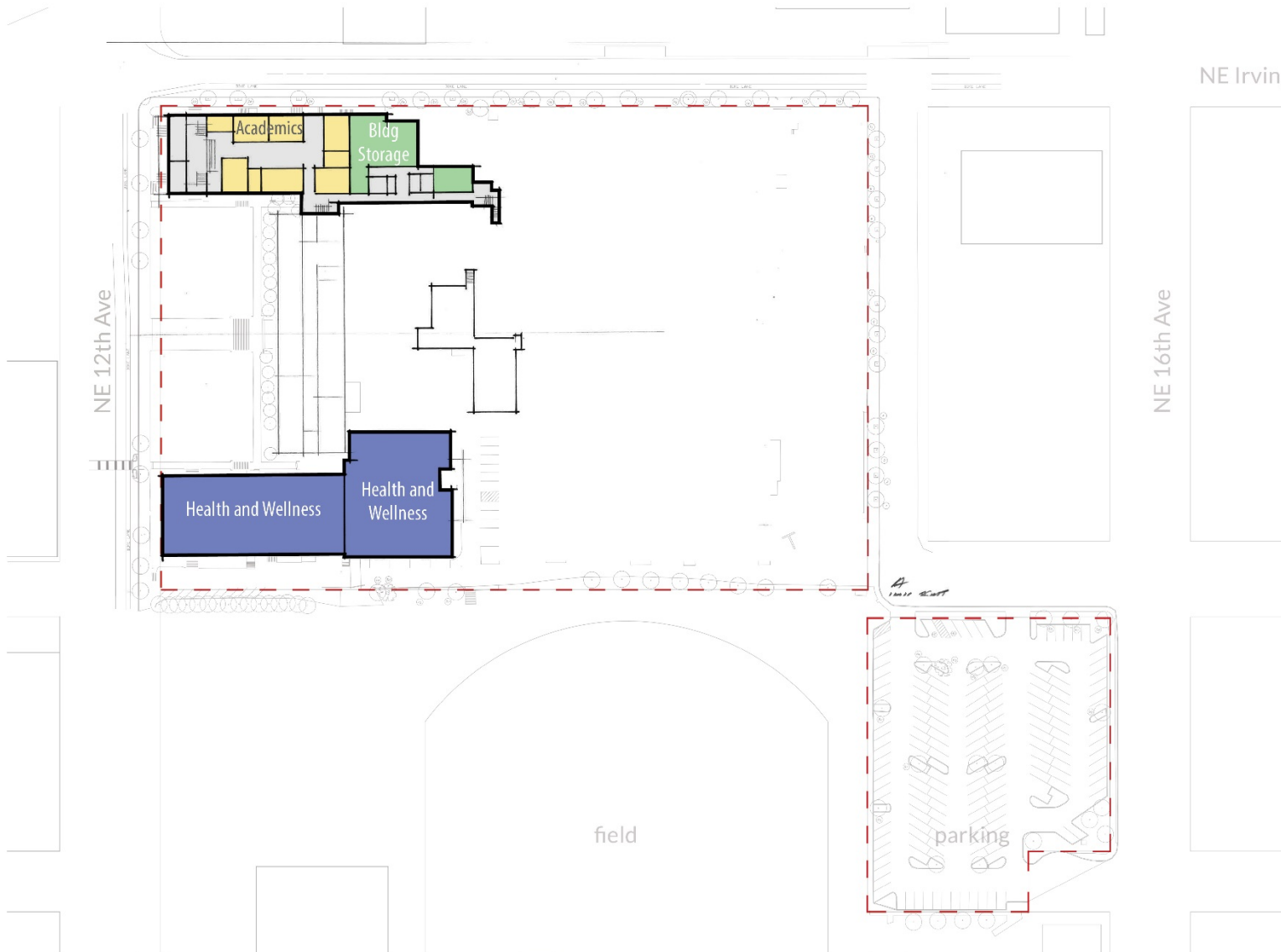
Banfield I-84

NE Irving St.

NE 12th Ave

NE 16th Ave

NE Glisan St



- CTE - ARCHITECTURE/DRAFTING
- CTE - AUTOMOTIVE
- CTE - BUILDING CONSTRUCTION
- CTE - COMPUTER SCIENCE/ROBOTICS

- CTE - DIGITAL MEDIA/RADIO KBPS
- CTE - ELECTRIC
- CTE - HEALTH OCCUPATIONS
- CTE - MANUFACTURING TECH

- CTE - EDUCATION AND CORE ACADEMICS
- SPECIAL EDUCATION (SPED)
- SCIENCE CORE ACADEMICS
- ATHLETICS/HEALTH

- VISUAL ARTS
- ADMINISTRATIVE/SUPPORT SPACES
- ALTERNATIVE PROGRAMS (NON-BENSON) Alliance, DART, Pioneer, PISA, etc...
- CAFETERIA KITCHEN (BASEMENT SUPPORT SPACES)

BENSON POLYTECHNIC HIGH SCHOOL
 04.14.2016 MPC-5
 SCALE: 1"=40'-0"



MASTER PLAN CONCEPT **B** LEVEL 0



Banfield I-84

NE Irving St.



NE Glisan St

NE 16th Ave

field

parking

- CTE - ARCHITECTURE/DRAFTING
- CTE - AUTOMOTIVE
- CTE - BUILDING CONSTRUCTION
- CTE - COMPUTER SCIENCE/ROBOTICS

- CTE - DIGITAL MEDIA/RADIO KBPS
- CTE - ELECTRIC
- CTE - HEALTH OCCUPATIONS
- CTE - MANUFACTURING TECH

- CTE - EDUCATION AND CORE ACADEMICS
- SPECIAL EDUCATION (SPED)
- SCIENCE CORE ACADEMICS
- ATHLETICS/HEALTH

- VISUAL ARTS
- ADMINISTRATIVE/SUPPORT SPACES
- ALTERNATIVE PROGRAMS (NON-BENSON) Alliance, DART, Pioneer, PISA, etc...
- CAFETERIA KITCHEN (BASEMENT SUPPORT SPACES)

Banfield I-84

NE Irving St.



NE Glisan St

NE 16th Ave

field

parking

CTE Auto

- CTE - ARCHITECTURE/DRAFTING
- CTE - AUTOMOTIVE
- CTE - BUILDING CONSTRUCTION
- CTE - COMPUTER SCIENCE/ROBOTICS

- CTE - DIGITAL MEDIA/RADIO KBPS
- CTE - ELECTRIC
- CTE - HEALTH OCCUPATIONS
- CTE - MANUFACTURING TECH

- CTE - EDUCATION AND CORE ACADEMICS
- SPECIAL EDUCATION (SPED)
- SCIENCE CORE ACADEMICS
- ATHLETICS/HEALTH

- VISUAL ARTS
- ADMINISTRATIVE/SUPPORT SPACES
- ALTERNATIVE PROGRAMS (NON-BENSON) Alliance, DART, Pioneer, PISA, etc...
- CAFETERIA KITCHEN (BASEMENT SUPPORT SPACES)



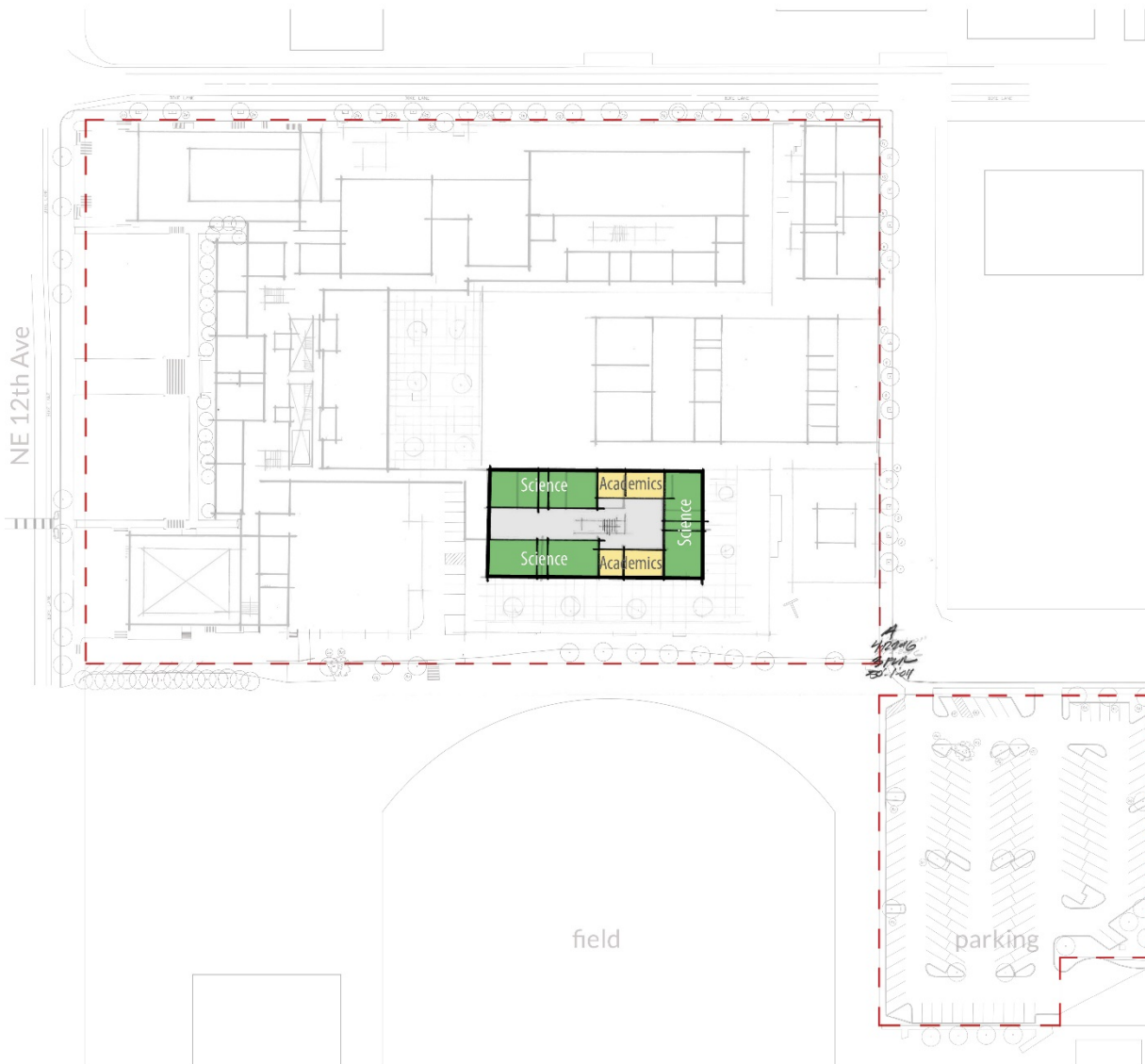
Banfield I-84

NE Irving St.

NE 12th Ave

NE 16th Ave

NE Glisan St



- CTE - ARCHITECTURE/DRAFTING
- CTE - AUTOMOTIVE
- CTE - BUILDING CONSTRUCTION
- CTE - COMPUTER SCIENCE/ROBOTICS

- CTE - DIGITAL MEDIA/RADIO KBPS
- CTE - ELECTRIC
- CTE - HEALTH OCCUPATIONS
- CTE - MANUFACTURING TECH

- CTE - EDUCATION AND CORE ACADEMICS
- SPECIAL EDUCATION (SPED)
- SCIENCE CORE ACADEMICS
- ATHLETICS/HEALTH

- VISUAL ARTS
- ADMINISTRATIVE/SUPPORT SPACES
- ALTERNATIVE PROGRAMS (NON-BENSON) Alliance, DART, Pioneer, PISA, etc...
- CAFETERIA KITCHEN (BASEMENT SUPPORT SPACES)

BENSON POLYTECHNIC HIGH SCHOOL
 04.14.2016 MPC-5
 SCALE: 1"=40'-0"



MASTER PLAN CONCEPT C LEVEL 3



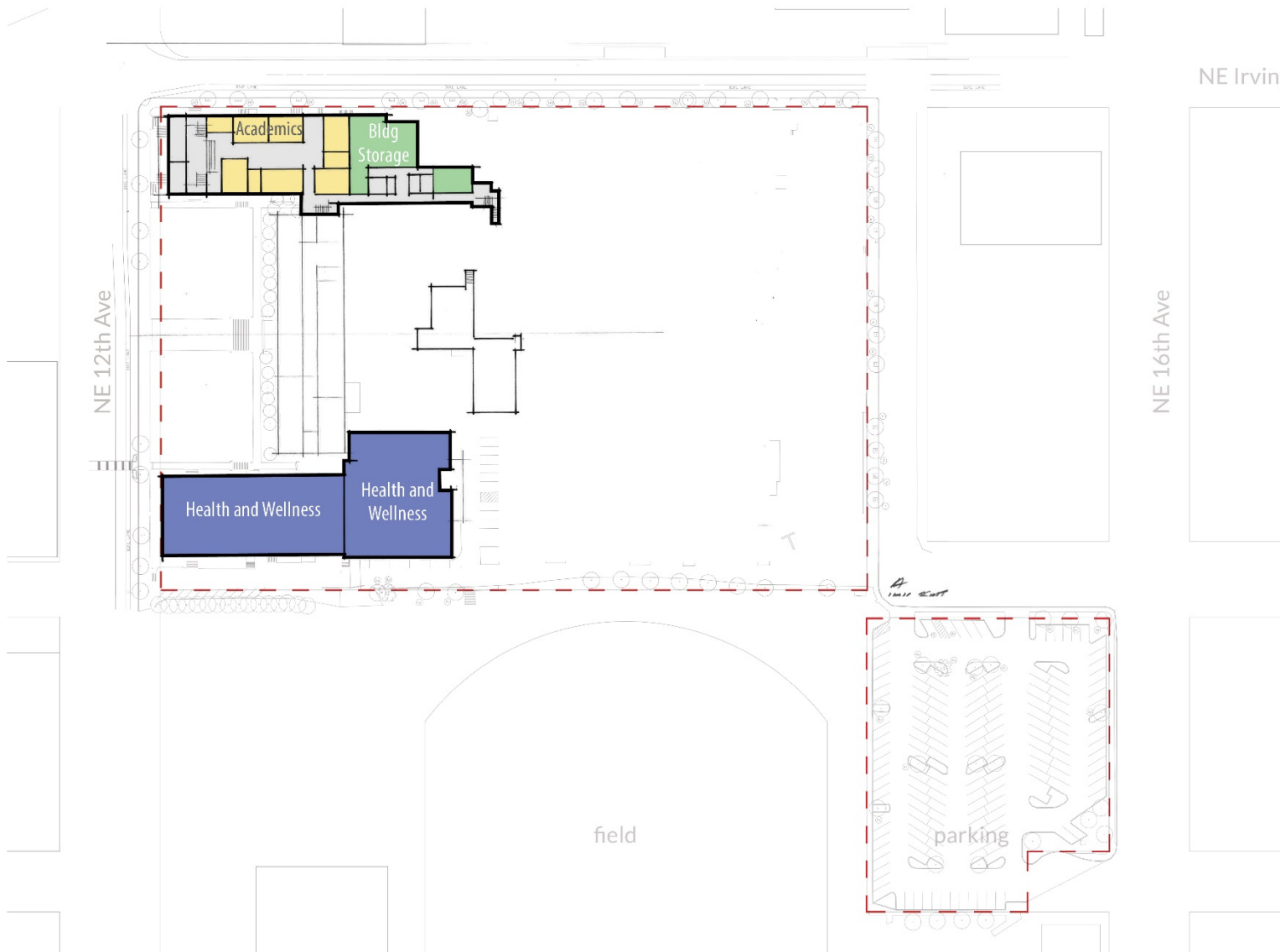
Banfield I-84

NE Irving St.

NE 12th Ave

NE 16th Ave

NE Glisan St



- CTE - ARCHITECTURE/DRAFTING
- CTE - AUTOMOTIVE
- CTE - BUILDING CONSTRUCTION
- CTE - COMPUTER SCIENCE/ROBOTICS

- CTE - DIGITAL MEDIA/RADIO KBPS
- CTE - ELECTRIC
- CTE - HEALTH OCCUPATIONS
- CTE - MANUFACTURING TECH

- CTE - EDUCATION AND CORE ACADEMICS
- SPECIAL EDUCATION (SPED)
- SCIENCE CORE ACADEMICS
- ATHLETICS/HEALTH

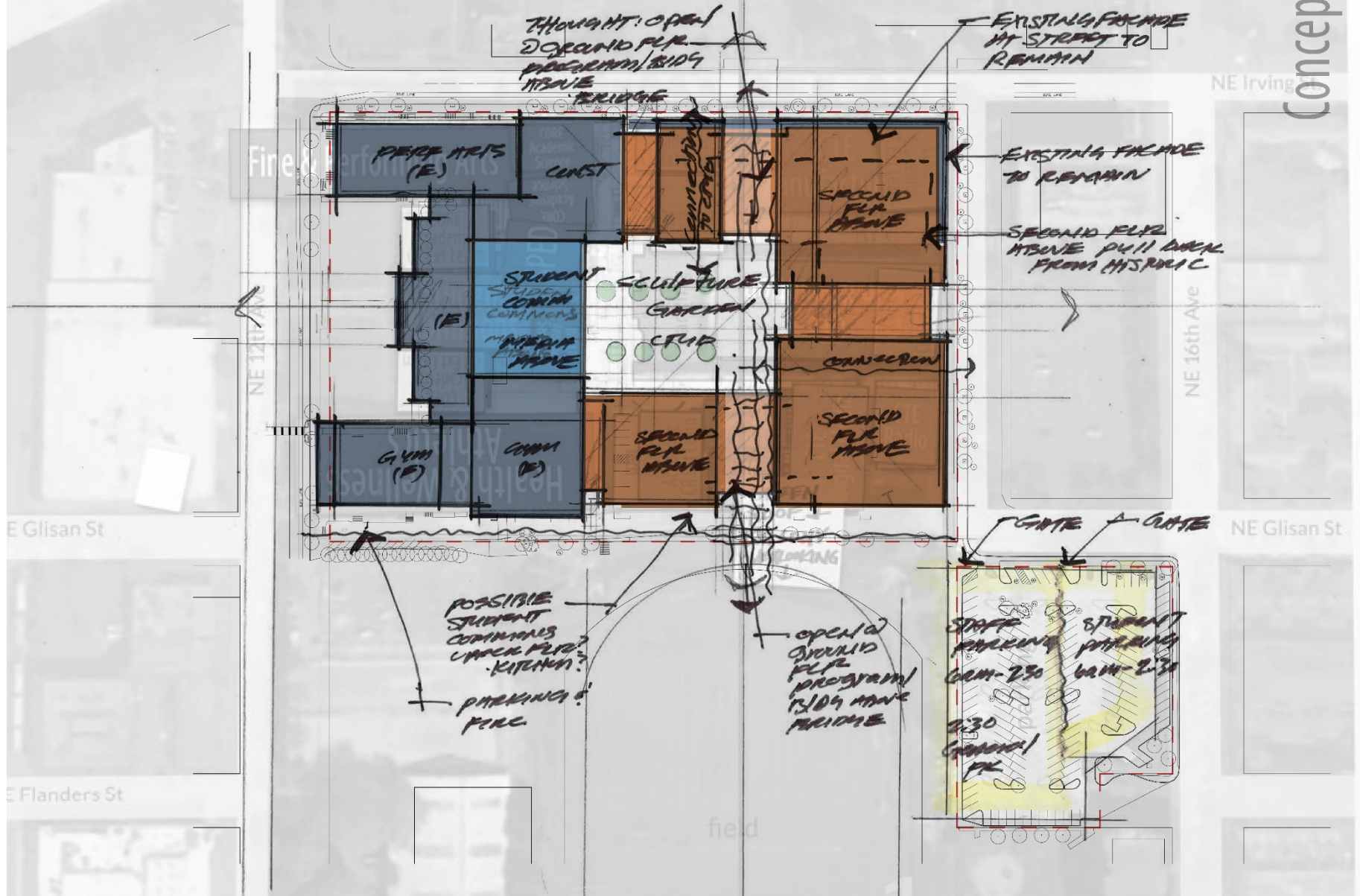
- VISUAL ARTS
- ADMINISTRATIVE/SUPPORT SPACES
- ALTERNATIVE PROGRAMS (NON-BENSON) Alliance, DART, Pioneer, PISA, etc...
- CAFETERIA KITCHEN (BASEMENT SUPPORT SPACES)

BENSON POLYTECHNIC HIGH SCHOOL
 04.14.2016 MPC-5
 SCALE: 1"=40'-0"



MASTER PLAN CONCEPT C LEVEL 0





Concept

PUBLIC COMMENTS



NEXT STEPS

- Community Workshop #2: Saturday April, 2nd 9AM - Noon
- MPC Meeting #5 – Thursday April 14th 6-8PM

